

WILDFLOWER POINTE ON SUMMIT LAKE



Continued to part of:
 The record plat entitled **SUMMIT LAKE**,
 Government Lot 2 and the SE¼ of the NW¼
 Section 11, T106N-R42W,
 Leads Township, Murray County, Minnesota

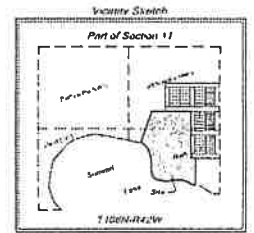
This drawing prepared by:
Bonnema Surveys Inc.
 Professional Land Surveying
 1000 21st St SW, Suite 204
 Williston, ND 58857
 Office (701) 831-2624
 Fax (701) 831-2627

Drawn by: Michael A. Zinnel & James D. Busch



LEGEND

- To and from Monument corner
 - To and from Survey Point
 - Benchmark
- Benchmark
 Elevation: 1047.46 (NAD 1983),
 1047.46 (NAD 83),
 1047.46 (NAD 1983)
- Relative Orientation
 The bearing or direction of this plan is based on an assumed datum which approximates the north line of 116.6° of the plat entitled **SUMMIT LAKE**, as approved by the State of Minnesota (T106N-R42W).



Total Area = 15.0± Acres
 Zoning District of Healthy

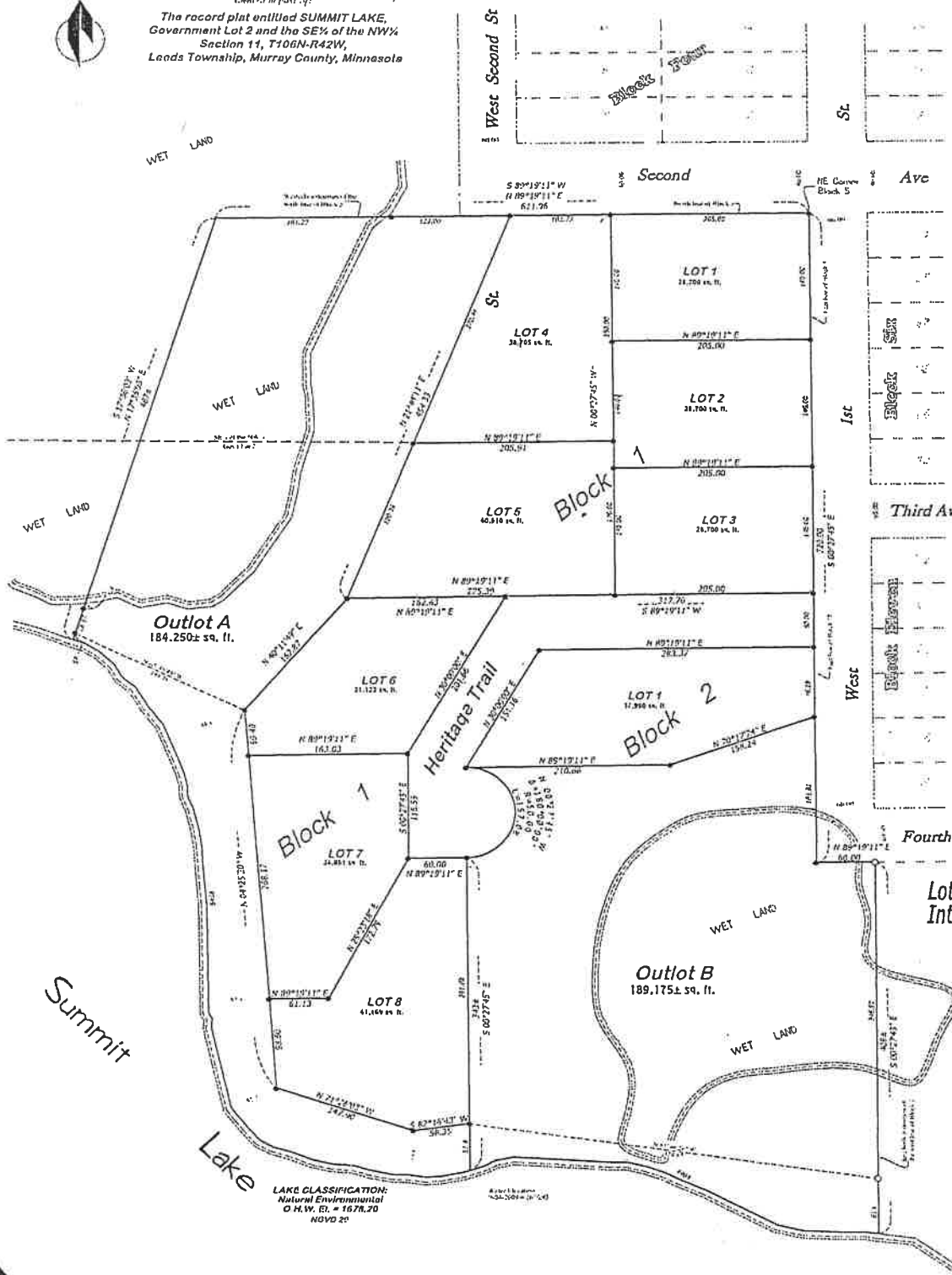
OWNERSHIP COVENANTS WILL APPLY

Lot Owners will have 1/9th Ownership Interest in OUTLOT A, with Lake Access

Contact

Mike Zinnel
612-810-3709

Jim Busch
972-977-1295



LAKE CLASSIFICATION:
 Natural Environmental
 O.H.W. EL. = 1678.70
 NOV 20

CONTACT INFORMATION

MIKE ZINNEL

Ph #: 612-810-3709

E-mail: mz@mikezinnel.com or

JIM BUSCH

Ph #: 972-977-1295

E-mail: txmnjim@sbcglobal.net